



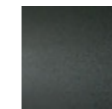
## FLOYD TABLE

design Piero Lissoni

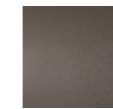
Small tables of different sizes (53 x40 cm, 60 x40 cm and 56 x56 cm), h 42 cm consisting of a 20 mm thick contoured MDF top veneered, on the top part only, in charcoal-dyed oak or Stone Oak®, with acrylic painting finish; edge and bottom always lacquered matt black. For the 53 x40 cm dimension only, the top is available also in countered marble, 15 mm thick coupled to a 2 mm steel sheet plate,

available in white Carrara, black Marquinia, red Levanto, Sahara Noir or Forest Green with satin finish and opaque transparent protective varnish or glossy or opaque polyester finish. Base consisting of two laser-cut steel sheets, 5 mm thick, with central support in tubular steel Ø 20 mm, finish with epoxy powder coating gunmetal grey or burnished colour. Floor support secured by black PVC feet.

### Base



Steel with  
Gunmetal Grey  
Coating



Burnished  
Painted Steel

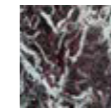
### Top



White Carrara  
Marble



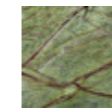
Black Marquinia  
Marble



Red Levanto  
Marble



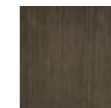
Sahara Noir  
Marble



Forest Green  
Marble

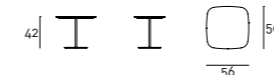
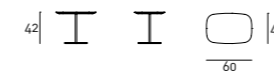
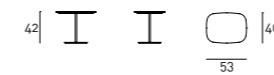


Charcoal-dyed  
Oak



Stone Oak®

### Technical Drawings



### Notes

Stone Oak®: this wood owes its particular coloring to an entirely natural process. Because of this, some slabs may look more brown than others. Our commitment is to provide you a high quality product; any differences in color should not be considered as defects.

On request, an additional protective (acrylic solvent) painting is available for the Stone Oak® finishing only. It should be noted that this additional coating slightly changes the natural color and texture of

the surface. Although this supplementary painting increases the surface resistance, it is still a natural material; therefore small superficial stains, due to oil or other substances, have to be promptly removed, before being absorbed in depth by the wood. Thus, we recommend regular care and maintenance.

Marble top available only for size 53x40x42cm. Please specify the required finish in the order.